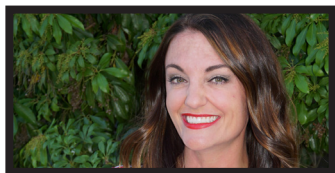




**JUNIOR LEAGUE OF  
PORTLAND, OR**  
*Women building better communities®*

THE MEMBERSHIP ISSUE



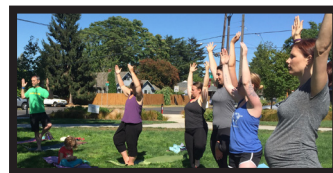
Presidential Welcome to  
our Membership

PAGE 2



JLP CAREs celebrates  
our membership

PAGE 4



Getting Social: Mem-  
ber Connections

PAGE 6

## Welcome League Provisionals 2016-2017



2016 Provisional Class - Junior League of Portland

### July 23 Provisional Brunch was a smash hit at Providence Park

We are so excited to welcome 121 Provisionals to the Junior League of Portland this year. The Recruitment Committee did a wonderful job finding a fantastic group of women to join us. The new provisional class is well-educated, diverse and brings amazing experience with them as we continue to grow our organization.

Continuing our positive retention trend is one of our main goals, which we'll support year over year by focusing on a member-centric League experience. We'll

continue to ask for feedback from our members throughout the year on how we can improve and enhance the League experience for all. Our hope is that each League member will blaze their own path, with a combination of volunteering, training, social activities and leadership. We have a great year ahead with an impressive group of women. Thank you for your dedication to membership in JLP.

*Jessica Richey*, Membership VP

126  
Provisionals

243  
Actives

306  
Sustainers

675  
Total Members

# Presidential Welcome to our Membership



to the 2016-2017 JLP year! I am thrilled to announce that we have 126 Provisionals, 243 Actives and 306 Sustainers at this point in the year, bringing our League to 675 members. Needless to say, the League is THRIVING! It's so exciting to be part of the League at this time. In my seven years in JLP, I've watched it change and grow, and I'm beyond excited to see what comes next.

I recently attended the Annual Provisional Brunch and was in awe of the dynamic group of women entering the League this year. The Brunch is always one of my favorite events for many reasons. The Provisional Committee puts so much energy into the event, and the buzz of the new members is inspiring and a lovely reminder of why we joined, why we stay and why we give our time and energy to the League! I left feeling so proud of what we are doing and ready for the year ahead. Last year's Recruitment Committee should be commended for their efforts; they went above and beyond with this new group of ladies.

This year my hope for our membership, whether you're a Provisional, Active or Sustainer, is that you feel like your contribution to JLP is something meaningful and impactful to you. Try

something new, meet someone new or learn something new. The saying really is true, you get out of the League what you put into it!

Everyone has already been working so hard to make this year a huge success. There are wonderful events planned; volunteer opportunities have been expanded to include more options and location; useful trainings are in the works; and fun member connections events are already in full swing. Be sure to save the dates for JLP CAREs & Harvest Soirée (Oct. 15), Gingerbread Jamboree (Dec. 3) and the New Year's Eve Charity Ball (Dec. 31). Be sure to check the League calendar often as things are always being added and updated.

I never imagined I'd be the President of the Junior League of Portland, but because of the incredible women who believed in me and taught me to push myself, here we are. I feel empowered to be here today with the most amazing women in Portland surrounding all of us on this journey. Don't be afraid to try something new; you never know what it might lead to.

Cheers to you all,

*KaDo Gorman*

President, Junior  
League of Portland



## Sustainer Corner



I want to take this moment to send special thanks to Sustainers for supporting the League through continued payment of sus-

tainer dues, contributions to the Endowment Fund and financial and volunteer support of the League fundraisers. Thank you for keeping the legacy alive.

Thank you to Trink Easterday for her valuable role in advising the Board of Directors. As part of her Sustainer Representative activities, she also coordinated and hosted gatherings for the sustainers throughout the year. Kudos and

thanks to you, Trink.

We honored Katy Neill as Sustainer of the Year. In her many volunteer roles over the years, she has touched many lives and made many positive impacts. Her most recent positive impact was the formation of the Jim Neill Memorial Golf Tournament, which has raised over \$100,000 for contributions to a variety of charities in the Portland area.

You will receive a postcard in the mail describing all the details of the events listed at right. For questions about events, contact Mary McFarland at [mary\\_mcfarland@frontier.com](mailto:mary_mcfarland@frontier.com).

*Gretchen Pilip*, Sustainer Representative

### SUSTAINER EVENTS

- **September 12** - Meet the Board, Julie Branford's home
- **September 20** - Craft Day, Teresa Forni's home
- **September 28** - Sustainer Lunch, Meriwether's Restaurant
- **October 28** - Sustainer Lunch, Meriwether's Restaurant
- **November 10** - Bunco Night for Actives & Sustainers, Sarah Burns' home
- **November 30** - Sustainer Lunch, Meriwether's Restaurant
- **December 7** - Annual Ornament Exchange, Teresa Forni's home
- **December 11** - Holiday Tea, Deluxe Hotel
- **1st Monday Every Month** - Sustainer Book Club

## Nominating & Placement



The Nominating and Placement (N&P) committee is excited about some changes the League is making this year to better serve our mem-

bership and the leadership of JLP. One thing to expect from us this year is a personalized membership placement interview. Every member of the League will be offered an interview with N&P to discuss their placement for the coming year as well as their long-term vision for their role in JLP. It is our hope that this will enhance the member experience and provide N&P with additional information for placing the membership as well as long-term

leadership succession planning.


The N&P co-chairs have also been sitting on the Governance Rollout Committee and are preparing for the changes that will come as the League splits into a Governing Board and Management Team in the coming year. Membership will soon be hearing more about the Governance and Management split and how this will benefit our League moving forward. One thing we do know is that this split will create more leadership opportunities in JLP, and N&P is excited about filling these positions with our future leaders! If you're interested, please reach out to us by emailing us at: [np@juniorleagueofportland.org](mailto:np@juniorleagueofportland.org)

*Kristi Manseth*, Nominating & Placement Chair



**Natalie Ballas**  
CONSULTANT

 [lularoenatalieballas@gmail.com](mailto:lularoenatalieballas@gmail.com)

 (304) 692-6600

 LuLaRoe Natalie Ballas

 [lularoenatalieballas](https://www.instagram.com/lularoenatalieballas)

 [lularoenatalieballas](https://www.lularoe.com)

 [#lularoenatalieballas](https://www.lularoe.com)





## Upcoming Events

### Oct. 15: JLP CAREs and Harvest Soirée celebrate our membership



Fun at the 2015 Harvest Soirée.

The Junior League of Portland is proud to present the 8th annual JLP CAREs volunteer-a-thon and the 3rd annual Harvest Soirée Fundraiser & Auction! Mark your calendars on Oct. 15 for a full day of League action.

During the JLP CAREs volunteer-a-thon, League members volunteer throughout the community. In 2015, we had twelve JLP CAREs Community Partners across Portland and Vancouver, and members volunteered a total of 680 hours.

The Harvest Soirée is a celebration of the JLP CAREs volunteer-a-thon and has become one of the JLP's key fundraisers. The event will feature a private Sustainer happy hour at 5 pm, with The Falcon Building's doors opening to all invitees at 6 pm. The Soirée, which is open to anyone 21 and older, will feature appetizers and an open bar with a signature cocktail, beer, cider and wine. Additionally, there will be a DJ, a photo booth and professional photography. Tickets go on sale Friday, Aug. 26. They are \$100 and can be purchased at [www.juniorleagueofportland.org/jlpcare](http://www.juniorleagueofportland.org/jlpcare)s.

Last year, JLP CAREs brought in \$67,000 for the League. This year, we hope to raise \$80,000. With your help, we can make this goal a reality and change the lives of many women and children in our community in a single day!

We look forward to seeing you all on Oct. 15 — first in your JLP red shirts and later in your cocktail dresses!

*Kirby Gibson, JLP CAREs Chair*



**Saunte Wellness Center**  
Massage, Facials, & Nails in Lake Oswego

**\$10 OFF**  
60 minute massage  
Expires 10/31/2016

(503) 593-9313  
[www.sauntes.com](http://www.sauntes.com)

**Iron Furnace Weightlifting**  
Forge Your Strength

**In Home Personal Training**  
We Bring the Gym to You!

**503.436.6323**  
[www.ironfurnaceweightlifting.com](http://www.ironfurnaceweightlifting.com)



Anthony Ballas, BSc, CSCS, USAW  
Personal Trainer

## Upcoming Events

### Gingerbread Jamboree decorates gingerbread for Festival of Trees

The Junior League of Portland is excited to partner with Providence Festival of Trees to bring gingerbread houses to one of Portland's premier holiday events. The festival attracts more than 20,000 people in the Portland metro area and is Providence Health and Services' most extensive fundraiser of the year.

The Festival of Trees raises over \$1 million annually to support Providence Health and Services. This is the Junior League of Portland's first year partnering with Providence. The League will continue to host its own Gingerbread Jamboree, where families can join together to make gingerbread houses and enjoy holiday cheer and entertainment. This year, the event will be held on Dec. 3 at OMSI.

The cost to sponsor a gingerbread house in the Festival of Trees is \$200 if you decorate your own. For \$250, the League will decorate a gingerbread house for you. The trees and houses will be on display at the Oregon Convention Center from Nov. 30 until Dec. 3. The gingerbread house may be donated or given back to the sponsor at that time.

For more information email Danielle Caldwell at [gingerbread@junior-leagueofportland.org](mailto:gingerbread@junior-leagueofportland.org).

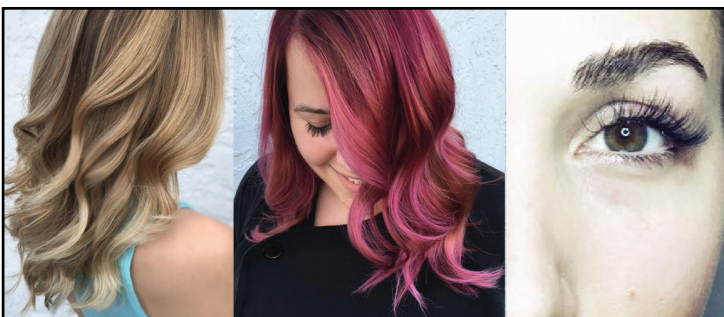
*Danielle Caldwell,*  
Gingerbread  
Jamboree Chair



### Save the Date: Charity Ball, Dec. 31

Ring in the New Year with the League and support our 1910 Campaign. An invitation will be sent soon.

*Tina Tunney & Leslie Nevius,* Charity Ball Chairs



**Hair  
Lashes  
Nails**

**P. cano**

**Artistic Salon**

**(503)  
636  
8758**

### Æ EYE DEPARTMENT

Eye Care & Eyewear

921 SW 16th Ave, Portland, OR  
[eyedepartment.com](http://eyedepartment.com)  
503-227-0573



**ANNIE BACON, O.D.**  
Accepting New Patients &  
Most Insurances



### Personal & Business Insurance

Auto, Home, Life & More!

**LYNDSAY R. KOOISTRA, CIC**

Business Development Specialist  
[lkooistra@laporte-insurance.com](mailto:lkooistra@laporte-insurance.com)

D: 971.404.3574

[www.laporte-insurance.com](http://www.laporte-insurance.com)

Let me help you  
protect what matters most!





# Getting Social

## Membership Connections Committee planning many 2016-2017 events

The Members Connections Committee is excited for the 2016-2017 year. Our No. 1 priority is to increase member engagement. We hope to do this in part by including our members' family and significant others in more events. Additional goals include increasing event visibility via social media/the Hot-Sheet, planning events well in advance, and including member suggestions. The committee already has some fun events in the works, including a golf event, happy hours, a Yappy Hour (all dogs welcome), and recurring events like the "Gals that Grub" series, and Supper Club to name a few!

If you have suggestions or ideas on events you'd like to see in the future, please pass them along to [memberconnections@junior-leagueofportland.org](mailto:memberconnections@junior-leagueofportland.org).

Member Connections is looking forward to an event-filled year. We can't wait to see you!

*Jessica Richey*, Membership Vice President



### MARK YOUR CALENDARS

- **September 17** -  
Member Connections  
Hiking, 10 am-12 pm  
Lower Macleay Trail  
Head, Forest Park  
Nicole Larson  
(386) 405-7212
- **September 24** -  
Member Connections  
Timbers Watch Party,  
5:30-7:30 pm  
On Deck Sports Bar  
Andrea Jones  
(208) 293-2396
- **September 21** -  
September GMM  
6-8:30 pm, JLP Office

## Laura Oxley shares her Junior League membership experience

“I joined the League in 2015 after moving to Portland from the UK. I was working horrible hours from home, sat at my desk from 6 am to 6 pm, and wanted to find a way to meet new people and get out into the community.

The League provided a perfect opportunity for me to do this. I have not only met some great, like-minded women who are driven and smart (and like to drink wine!), but I also found out so much about the needs and problems within my new community.

For my sponsored volunteer project in the fall, I volunteered for the morning at Ronald McDonald House, one of our community part-

ners. It was such a fantastic experience, and I fell in love with the feeling of home it provided for the families of sick children and also the people who worked there. I have been volunteering there twice weekly ever since and get so much from it.

I have also found having access to such a wealth of information about the problems Portland faces, particularly with human trafficking, really empowering as it has allowed me to educate friends (including native Portlanders) about the issue and spread knowledge and awareness in a city that is still quite new to me.

I am so glad I joined the League

and look forward to my first Active year as part of the End Domestic Violence Committee. “

*Laura Oxley*, End Domestic Violence Committee



# Thank you to all our donors

## Visionaries Circle (\$1000-\$4999)

- Jennifer Leonard
- State of Oregon Department of Corrections
- Sugar Me LLC

## Benefactors (\$500-\$999)

- Dave DiLorenzo
- Gretchen Pilip\*
- Oregon Community Foundation
- Tegan Enloe\*

## Bronze Supporter (In-Kind)

- Michelle Otten\*
- Courtney Flood\*

## Patrons \$250-\$499

- Ashley Eli\*
- Christine Swanson\*
- Intel Corp
- Jenn Lynch\*
- Marilyn Pamplin\*
- Mimi Denes\*
- Sharon Dee Rose
- Teresa Forni\*

## Partners \$100-\$249

- |                        |                         |                          |
|------------------------|-------------------------|--------------------------|
| • Adelaide Hermann*    | • Cindy Fletcher*       | • Lisa O'Rourke*         |
| • Allison Kehoe*       | • Courtney Flood*       | • Lynda Vuller Gebhardt* |
| • Anne Stein-Gray*     | • Dinah Ladizinsky-Faw* | • Mabel Harris*          |
| • Barbara Rice*        | • Gayle Cable*          | • Margaret Hill*         |
| • Barbra Jorgensen*    | • Gwyneth Booth*        | • Marjorie Wilson*       |
| • Bettsy Preble*       | • Jan Wismer*           | • Nancy Graham*          |
| • Beverly Ormseth*     | • Jean Josephson*       | • Patrica Wall*          |
| • Bonnie Stewart*      | • Jean Rittenour*       | • Paula Madden*          |
| • Caroline Swindells*  | • Joanne Carlson*       | • Susan Schreiber*       |
| • Carsolina Walton*    | • Julie Branford*       | • Susan Stein*           |
| • Christine Zieverink* | • Katie Shuck*          |                          |
|                        | • Kristen Kern*         |                          |
|                        | • Lee Ragen*            |                          |
|                        | • Leslie Wheeler*       |                          |

## Supporters Circle \$1-\$99

- |                        |                                |                      |                        |
|------------------------|--------------------------------|----------------------|------------------------|
| • Alison Burcham*      | • KaDo Gorman*                 | • Lisa Douglas       | • Patricia Hay*        |
| • Anna Rankin*         | • Kaitlyn Van Alyne*           | • Lisa Hamilton*     | • Patricia Knollman*   |
| • Anne Munch*          | • Karen Wheeler*               | • Lisa Kakishita     | • Patricia Schleuning* |
| • Bambi Rice*          | • Kathryn Yates*               | • Lucille Vosmek*    | • Peggy Wood*          |
| • Barbara LeBrun*      | • Kelsie Davis*                | • Lyndsay Kooistra*  | • Raechel Frogner*     |
| • Britt Tilton*        | • Kirsten Leonard*             | • Lynnette Houghton* | • Sally LeFeber*       |
| • Carolee Kolve*       | • Kris Elliott*                | • Marcia Director    | • Sally Wolcott*       |
| • Deborah Boone*       | • Kristin Burrus*              | • Margaret Dooney*   | • Susan Holloway*      |
| • Deborah Tragesser*   | • Kristin Marshall*            | • Mari Lou Diamond*  | • Suzanne Horstmann*   |
| • Diane McCall*        | • Kristin Wellenstein Kilshaw* | • Marilyn Lindgren*  | • Tana Hutchinson*     |
| • Donna Smalldon*      | • Leslie Slakoff               | • Martha Gazeley*    | • Tricia Ray*          |
| • Elaine Flowerree*    | • Linda Barnes-Lewis           | • Mary Holstein*     | • Tyson Gillard        |
| • Elizabeth Butrick*   | • Linda Hering*                | • Mika Malone*       | • Valerie Thompson*    |
| • Jennifer Martindale* | • Linda Veltman*               | • Molly Spencer*     |                        |
| • Jessica Tolleson*    | • Lindsey Koehler*             | • Nancy Janney*      |                        |
| • Jill Arena*          | • Lisa Determan*               | • Natalie Jasinski*  |                        |
| • Judy Fenker*         |                                | • Patricia Brandt*   |                        |



**JUNIOR LEAGUE OF  
PORTLAND, OR**

*Women building better communities®*

5100 SW Macadam Avenue  
Suite 450  
Portland, OR 97239



NONPROFIT  
ORGANIZATION  
US POSTAGE PAID  
PORTLAND, OR  
PERMIT NO. 472



Fall 2016

# PRESS

*Mark your calendars for the 3rd annual*

## *Junior League of Portland Harvest Soiree & Auction*

*Saturday, October 15, 2016  
6 pm to 10 pm*

*\*Hosted Sustainer Happy Hour starting at 5 pm*

*The Falcon Building*